



Learning Together Every Day

Hammond Park

PRIMARY SCHOOL

Year 6



Parent Information Booklet

2022

10 Eucalyptus Drive

Hammond Park WA 6164

Phone: 08 9494 3200

www.hammondparkps.wa.edu.au

Updated 22 February 2022

We will schedule a Webex in Week Six to go through the components of the Year 6 handbook. Please check Connect for more information



Our Values

Our school motto is Learning Together Every Day. It encompasses our commitment to establishing a collaborative learning environment where students can be the best they can be. Our school is a safe, respectful and joyful place to be.

We are committed to building genuine partnerships with the community and establishing positive relationships with children and their families.

We have high social and academic expectations for all students. We work together to achieve our goal that students become lifelong learners.

Teachers at HPPS are effective teachers. They engage in professional dialogue, share best practice and professional learning that is anchored to their daily work and is part of the culture of our school. The very essence of our learning community is a focus on and a commitment to the learning of each student.

Term Dates 2022

All term dates for the current and future years are available on the Department of Education website: <https://www.education.wa.edu.au/future-term-dates>

Term 1: Monday 31 January – Friday 8 April

Term 2: Wednesday 27 April - Friday 1 July

Term 3: Monday 18 July - Friday 23 September

Communication

Please feel free to make an appointment to see us regarding your child's progress or any concerns you may have. Teachers are best contacted via email during business hours. Please note you may not receive a response until after 3pm.

Connect

We will also use Connect to communicate with parents. Connect can be accessed by parents via their P-number. Please see the office if you need assistance with accessing Connect.

Academic Program

Our academic program consists of English, Mathematics, HASS, Science, Health and Design & Digital Technologies. In every class, there is a range of abilities and learning needs. Students will consolidate learning at various levels of difficulty. Every child will experience targeted small group work with their teacher on a regular basis. Students will be aware of learning requirements for each lesson through the use of Learning Intentions.

At Hammond Park Primary School, we use the following strategies to cater for the needs of all students in our classroom.

- ✓ Explicit teaching (whole class and small group)
- ✓ Hands on and interactive activities
- ✓ Small group activities
- ✓ Differentiated teaching and learning
- ✓ Mixed grouping and ability grouping
- ✓ Tuning in and plenary activities
- ✓ Integrated use of digital technologies

English

Our English block includes formalised spelling, writing, speaking and listening and reading activities.

Spelling

In Years three to six, the Words Their Way spelling program is used to teach word study skills. Students are taught to discover patterns in words and think critically about the words they read and spell. Students work their way through activities using their 'word sort'. Word sorts are chosen specifically to cater for individual needs in the classroom and for the spelling behaviours they demonstrate in their writing.

Talk for Writing

Talk for Writing is Hammond Park Primary School's whole-school approach to teaching writing. This is an engaging and challenging program where students are scaffolded through stages of the writing process. They create high quality, structured texts and build on their bank of vocabulary and creative ideas.

Lexile

Your child will sit a Lexile Placement Test at several points throughout the year. This will give them a range of books to choose from in the library that reflect their reading ability and interests. Once they have read their Lexile book, your child may complete a comprehension quiz and gain points and certificates through their online account. Please encourage your child to read their Lexile book at home. E-books are also available for your child to read and complete quizzes.

Shared and Guided Reading

During our English block, students will be taught a range of reading comprehension strategies. They will engage in a range of varied text types and practice these reading strategies. This will take place both as a whole class (shared reading) and in small groups (guided reading).

Mathematics

Mathematics blocks cover Number & Algebra, Statistics & Probability and Measurement & Geometry. Mathematical concepts will also be covered in other learning areas, such as Science and HASS. The Maths block incorporates explicit teaching and small group activities. Small group activities involve a range of hands on, ICT-integrated, written and/or problem solving activities. Students will learn a range of problem solving strategies throughout the year to use when solving multi-step word problems.

Specialist Classes

This year our specialist subjects are:

LOTE – Indonesian

Art

Music

Physical Education

Health – Once a fortnight with a specialist teacher and also taught in class by the classroom teacher.

Documented Plans

Your child's classroom teacher will contact you for a meeting if an individualised learning plan is required for your child in one or more learning areas. This is called a Documented Plan. The purpose of these plans is to provide some students with

individualised learning support to help them achieve learning goals at their ability level.

Class Timetable

Please refer to your child's Connect page to access the class timetable.

Morning Routine

The classroom door opens at 8:40am. Please encourage your child to take responsibility for his/her belongings and check the morning board before entering the classroom. Every day, the whiteboard will engage students in an activity before the siren at 8:50am.

Library

Every class will have a set library day each week for returning and borrowing books. Please see the timetable on your child's Connect page to know their Library day. Students can only borrow new books if they have a library bag at school. This is to ensure all library books are kept safe from drink bottles or leaking food containers in school bags.

Homework

Homework for students in Year 6 is made up of two parts:

- *Research Project:*

At the beginning of each term, students will be assigned a project that will require them to practise their research skills. The project outline has been posted on Connect for parents to see at the beginning of each term. A timeline for completing activities will be given to students.

- *Daily Reading:*

At least 15 minutes of reading each weekday is required. This can be a library book or any other level appropriate text.

Absences

Attendance at school every day is critical to the academic and social/emotional development of all children. We encourage all students to attend school regularly so they don't miss out on important lessons within our learning programs. Staying home is encouraged when your child is sick.

Allergies

Our school is allergy aware. We have several students with specific allergies and medical requirements, including anaphylaxis. As a precaution, please be aware of this and avoid sending nuts to school as part of your child's lunch. If you would like to celebrate your child's birthday, please use the canteen service as Mrs Tibbits has a list of specific allergy requirements.

Camp

One of the most exciting events for students on the Year 6 calendar is their annual camp at Mandjedal Activity Centre. This year's camp will take place in Term 3 from Monday 19 September until Wednesday 21 September. The cost of the camp and permission forms will be sent to parents in Term 2.

The purpose of this trip is to:

- Enhance interpersonal and leadership skills
- Improve self-management, decision making and time management skills;
- Engage with and appreciate the outdoor environment for sustainability in the future
- Have fun



We will be travelling by bus to and from Mandjedal Activity Centre. The bus will leave Hammond Park Primary School on Monday 19 September. Please ensure your child arrives early to school on that day. The bus will return students to Hammond Park Primary by mid-afternoon on Wednesday 21 September.

Over the two days, the children will participate in activities such as; rock climbing, geocaching, laser tag, orienteering, exploring underground tunnels, archery, flying fox, raft building, frisbee golf and inflatable obstacle course.

Children will be required to bring morning tea and lunch in a disposable bag for the first day of camp. All other meals will be catered for. Children will be required to bring a suitable bag for all their belongings. They do not need to wear school uniform, but they must wear appropriate clothing for recreation activities. It is recommended that students bring the following items:



-
- a day bag (small backpack or canvas style bag) to carry daily items
- a change of clothing for each day
- evening wear for dinner e.g. jeans & jumper
- bathers and rashvest underwear
- two towels – one for water activities and one for shower
- suitable footwear (runners)
- beach footwear (thongs)
- a hat
- nightwear (pyjamas)
- bedding (pillow and sleeping bag)
- sunscreen
- mosquito repellent
- a water bottle and
- toiletries
- plastic bag for wet and dirty clothing

We strongly suggest that students pack their own bags or at least are helping parents to pack their bags. This will ensure that students are aware of all the belongings that they are bringing. Please clearly label all belongings including sleeping bags and pillows.

Participants who don't bring suitable clothing may not be permitted to participate in some of the activities. Please note that jewellery or loose clothing can be a safety hazard for all activities. Children will not be permitted to bring electronic devices e.g. mobile phones or iPads on camp.

In case of an emergency, parents can contact the school administration office between 8am and 4pm. For out-of-hours contact, please call the activity centre on 9525 1210. The only instance that parents will be contacted by the school or camp will be if there is an emergency.

Students who have a medical Action Plan and medication stored at the school will take this medication with them to camp.

Information about student's dietary requirements will be collected in Term 2.

Graduation

Another exciting event on the calendar for our Year 6 students is their Graduation Ceremony and Dinner.

These events will take place at the end of Term 4. More information will be sent out at the beginning of Term Four. Please check Connect for updates.

Our amazing Fund Raising Committee, a subcommittee of the P&C, has been fundraising for these Year 6 events since Term 3 last year. They have hosted some sensational fundraisers and the Year 6 community is very grateful for their efforts.

Mobile Phone Policy

As per the State Government's *Student Mobile Phones in Public Schools* policy, HPPS students are banned from using mobile phones from the time they arrive at school to the end of the school day. This extends to the use of smart watches which need to be on Airplane Mode during this period. The policy aims to reduce distractions in class and improve student engagement.

In the policy, primary students cannot have a mobile phone in their possession. This means if your child brings a mobile phone to school, it will be stored with their class teacher until the end of the school day.

Exceptions are allowed for students who have approval to use a phone to monitor health conditions, or where teachers give students permission to use mobile phones for a specific purpose. If a student is found to be using their phone on school grounds, it will result in an immediate strike and a possible loss of good standing.

Thank you for your support in continuing to work with our school to ensure that all students in Year 6 do not use their mobile phones whilst at school.

If your child needs to contact you, they can do so through the school administration. Likewise, if you need to get a message to your child, you can call the school.

Student Leader Roles and Responsibilities

In Term 4 of Year 5, students will nominate for a number of leadership roles throughout the school; Prefect, Faction Captain and PBS Leader. They will be required to fill out a nomination form that highlights their reasons for nominating and the characteristics that make them suitable for the role. Students will also make posters that will be displayed outside F-block.

Voting for the leadership positions will take place in Term 4 of Year 5. The Australian Electoral Commission runs the process.

If students are nominated, there are a number of responsibilities that come with each position as well as high expectations. Each student will also undertake a Leadership Mentoring program and attend student meetings both before and after school.

Some of the roles and responsibilities of each leadership position include;

Prefect:

- Follow the correct guidelines when managing the school flags
- Make speeches and announcements at assembly and on the PA
- Set up and pack up assemblies
- Deliver lost property
- Supervise break time games
- Hand out sports equipment during recess and lunch duty

Faction Captain:

- Attend Student leader meetings
- Assist with the allocation of lunchtime equipment
- Assist with the organisation of Middle and Senior sport equipment
- Make speeches and announcements at assembly and on the PA
- Assist with Runners' Club and other PE activities

PBS Leader:

- Attend PBS meetings
- Take ideas from students back to the PBS meetings
- Support teachers to create information on PBS
- Make speeches and announcements at assembly and on the PA
- Collect PBS Slips and tokens and assist with the tally

If your child is not chosen for a position, there are many other leadership opportunities that are available throughout Year 6 including class PBS Representatives and Games Leaders.



Swimming Lessons

In 2022, swimming lessons for Years 5 and 6 students will take place during weeks 1 and 2 of Term 1. Lessons will be taking place at Coogee Beach. Transport will be provided and parents are welcome to attend.

Please ensure that your child comes to school prepared for swimming lessons. Class teachers will discuss with their students if they will change at school or come ready in their swimming clothes. Students will change back into their school uniform when they return to school.

Please make sure all items of clothing and equipment, including goggles, and towels, are clearly labelled.

Dance Lessons

In preparation for their Graduation, Year 6 students will participate in a dance program throughout Term 4. Teachers from Humphreys Dance Studio will give our students the opportunity to learn a range of social dances as part of the curriculum. These dance lessons encourage appropriate social interaction, respect, cooperation, poise, social grace and of course rhythm and creativity. This means that our students will be well prepared for their Graduation Ceremony and Dinner.

Forms will be sent home at the end of Term 3.

Positive Behaviour Support (PBS)

We are a Positive Behaviour Support (PBS) school. PBS is a school-wide framework aimed at improving the academic and behavioural outcomes of all students. It works to establish a sustainable climate across the school in which appropriate behaviour is the norm. To achieve this goal, all teachers use whole-school proactive strategies and explicitly teach behavioural strategies in the classroom.

The school Behaviour Matrix is organised around four School Expectations:

We are RESPONSIBLE

We are RESPECTFUL

We are SAFE

We are LEARNERS

A PBS Student of the Week will be selected from each class to recognise students who have demonstrated the PBS Expectations.

HAMMOND PARK PRIMARY SCHOOL EXPECTATIONS

	WE ARE RESPONSIBLE	WE ARE RESPECTFUL	WE ARE SAFE	WE ARE LEARNERS
All Areas	<p>Look after equipment</p> <p>Manage our behaviour and feelings in a positive way</p> <p>Wear our school uniform</p> <p>Be organised</p> 	<p>Demonstrate 'active listening'</p> <p>Use words to express our feelings</p> <p>Use our manners</p> <p>Show compassion towards others</p>	<p>Use equipment carefully and correctly</p> <p>Tidy up after ourselves</p> <p>Walk in the classroom</p> <p>Follow the class mat manners</p>	<p>Follow teacher instructions</p> <p>Show resilience</p> <p>Be the best you can be</p> <p>Have a growth mindset</p> <p>Work collaboratively</p>
Outside Areas	<p>Walk quietly around the school</p> <p>Deal with playground problems before returning to class</p> <p>Arrive on time after breaks</p> <p>Leave the school grounds promptly</p>	<p>Wait patiently for others to move</p> <p>Respect other's opinions</p> <p>Use appropriate language and volume levels</p> <p>Follow the duty teacher's instructions</p> <p>Share the space and equipment with others</p>	<p>Use the crosswalk correctly</p> <p>Stay in supervised areas</p> <p>Keep our hands and feet to ourselves</p> <p>Walk in front of our teacher in line</p> <p>Use equipment safely and correctly</p> <p>Follow the expectations of each playground</p> 	<p>Agree on the rules before starting games</p> <p>Respect other's opinions</p> <p>Follow the agreed rules</p> <p>Play cooperatively</p>
Eating Areas	<p>Use the canteen correctly</p> <p>Minimise packaging in lunchboxes</p> <p>Eat healthy food every day</p> <p>Each lunch in our classrooms</p>	<p>Respect other people's food choices</p> <p>Use our manners whilst eating</p> 	<p>Be allergy aware</p> <p>Eat our own lunch</p> <p>Finish our food outside our classrooms</p>	<p>Read the information on recycling bins</p> <p>Use the recycling bins and compost bins correctly</p> 
Toilets	<p>Use toilets correctly and quickly</p> <p>Leave toilets as soon as we have finished</p>	<p>Allow other's their privacy in the toilets</p> 	<p>Wash hands</p> <p>Use the Toilet Record sheet (Years One to Six)</p>	

Good Standing and Behaviour Policy

HPPS follows a Good Standing Policy in line with the Department of Education policies. An online form will be sent to parents in the next few weeks. We ask parents read over the Good Standing Policy with their children before completing the form.

One element of the Good Standing Policy is Strikes. Strikes are given when children are not following the PBS expectations. Students and staff have worked collaboratively to develop a list of behaviours that could constitute a strike in Year 6.

[illegible]

The Behavioural Incident Slip is another aspect of our Good Standing Policy and will be used for students in Year 4 – 6 this year. Students may be asked to complete a behaviour infringement slip after an incident at school. The aim of this is for students to reflect on their behaviour and learn from the incident. Students will be given ownership over their behaviour and at times, their consequences. Please go through this slip with your child and return it to school the following day.

ANZAC Ceremony

Each year, students from Year 6 are invited to take part in the Cockburn Youth ANZAC Parade. We are waiting to hear details about the 2022 Parade. The service normally takes place at Beal Park, Kent St, Spearwood.

Parents & Citizens Association

The Parents and Citizens Association (P&C) provides a great opportunity for parents and community members to support the learning and infrastructure of the school through fundraising events. The role of the P&C is diverse and are the voice for our parents. Our P&C contribute significantly to the funding of programs and facilities

within our school. The Annual General Meeting is held in February. Dates of meetings are published on the school communication app *Connect* and on our school website. The committee welcomes input from parents and community members.

School Uniform

We encourage all students to wear:

- School uniform
- A school hat
- Suitable footwear that your child can independently put on and take off as they are allowed to take their shoes off during the day
- Sunscreen (please apply before the school day)



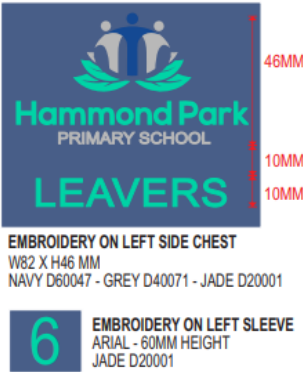
School uniforms can be purchased from **Uniform Concepts**, Unit 1 35 Biscayne Way, Jandakot, Ph: 9270 4650.



Leaver's Shirts

The Leaver's uniform is a very special part of the Year 6 journey and something students take a lot of pride in.

Year 6 polo will be able to be purchased from our uniform store at any time of the year.

FRONT	BACK	EMBROIDERY
		

If you would like to purchase a Leavers' shirt with the names of the Year 6 students printed on the back, this usually needs to be ordered at the end of Year 5 to allow for delivery and production.

The signing of shirts at the end of Year 6 will be discussed with the students in the last week of the school year.

Daily Requirements

Please send all stationery items (from the book list) in a sealed plastic bag with your child's name on it. Some items will be sent home at the end of the year so they can be reused in high school (eg. headphones).

A library bag will be required from Term 1.

Every day your child will need a large school bag containing:

- Container with student's Crunch & Sip (fruit and/or raw vegetables)
- Drink bottle filled with **water only**
- Morning tea – snack eg. fruit, vegetable sticks, cheese/crackers
- Lunch – sandwiches, salad wraps etc.

Please note teachers are not able to heat up student's recess/lunch

- Clearly labelled school hat

Please label all items, including spare clothing

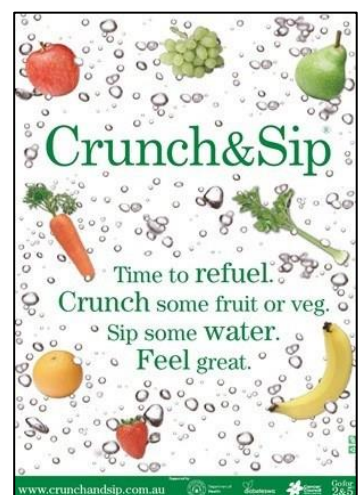
Please do not send expensive or valuable belongings from home, as they can easily get lost and this can cause distress to your child.

At Hammond Park we follow the Department of Education's *Healthy Food and Drink Policy*.

Crunch & Sip

The Crunch & Sip program is an easy way to help kids stay healthy. It is a set break to eat fruit or vegetables during the day to give your child energy to improve mental performance and concentration in the classroom.

Students are required to bring in fruit or vegetables in a clearly labelled container to eat during Crunch & Sip time.



School Canteen

The school canteen, *The Fabulous Food Factory* provides a lunch service on Mondays, Wednesdays, Thursdays and Fridays. The canteen menu is over 80% 'green' according to the *Department of Education's Healthy Food Guidelines* and the

majority of food is made on premises. Menus are displayed next to the canteen and on the QuickCliq website. Orders can be placed over the counter or via <http://www.quickcliq.com.au>.

Our *Fabulous Food Factory* follows sustainable processes as part of our Waste Wise commitment. We use reusable containers, cups, sandwich wraps, stainless steel cutlery and paper straws.

Medical Conditions

If your child has a medical condition, it is important all appropriate medical forms are filled out during the enrolment process. If your child has a Medical Action Plan endorsed by a doctor, please provide a copy to the office as soon as possible. Please provide the office with any emergency medication your child requires, as outlined in their Medical Action Plan. It will be recorded and taken to the classroom.

If your child needs to have medication administered during school hours, an *Authority to Administer Medication form* will need to be completed at the front office.

We are an allergy friendly school. This means we don't have certain products available at the canteen and we request that parents avoid nut products in lunch boxes.

Useful Websites and Communication Apps:



Hammond Park Primary School website address:

<http://hammondparkps.wa.edu.au/>

Email address:

HammondPark.PS@education.wa.edu.au



Reporting absences please text 0437 780 341

Advise student name and reason for absence

Note: If the school is not made aware of an absence a text message will be sent to confirm.



To make school payments or pay for excursions/in school performances you can use the QKR! App.

It is available for free from the App Store or Play Store.



Our school uses *Connect* and the *Connect Now App* to communicate with our parent community.

We ask parents to install the free *Connect Now App*. It is available for free from the App Store or Play Store.

To access Connect you will be provided with a 'P' number and password from the Department of Education early in Term 1.

P&C

Hammond Park Primary School P&C Email:

hammondparkpac@gmail.com



Find the Hammond Park Primary School P&C on Facebook.



The Fabulous Food Factory's Email:

canteenhpps@gmail.com

Find us on Facebook as the Fabulous Food Factory - Hammond Park PS.

Follow on Instagram: canteenhpps.



The Fabulous Food Factory (our canteen) has online ordering.

Go to quickclik.com.au

This handbook is written to provide our families with information about how our school operates. If there is anything you do not understand, please ask us. We are happy to help.

We look forward to sharing this exciting and important journey in your child's final year of Primary School.

